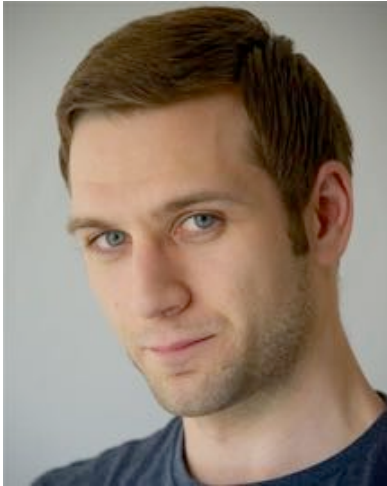


Welcome

Summer is upon us, here's what new with **DPM**

JOHN LOVE



New member John Love is a happy-go-lucky type of guy – compassionate, caring and honest.

He has a dark side too and has been cast as brooding and mysterious as well as the action hero and 'average' Joe. John has a neutralised, native central Scots accent and high baritone voice.

His extensive sports skills include abseiling, climbing, horse-riding, kick boxing, Kung Fu, stage combat and he is highly skilled at martial arts.

Spotlight view pin: 3016-3497-1217

LIBBY WATTIS



Libby continues to tour her one woman show, **The Cleverest Thief**.

Written by Caroline Coxon, the play is based on Libby's extensive research and has drawn praise for its humour and energy, successfully taking audiences into the mind and spirit of a woman with dementia.

Spotlight view pin: 0693-1200-0072

CAROLYN EDEN



Carolyn is Annabelle Harper in Chris Nickson's **The Empress on the Corner**.

The story of 19th century working-class Leeds and an awakening to feminism and politics for a Victorian landlady previewed in June as part of the Leeds Big Bookend Festival 2016.

Spotlight view pin: 5218-9083-8610

MARK BURGHAGEN



Mark completed another successful run playing Richard II for Bronzehead Theatre as part of the Shakespeare 400th anniversary celebrations in York and Germany.

Spotlight view pin: 9252-1278-1136

MOVING DAY



At the end of April, **Direct Personal Management** successfully moved the **LEEDS** Head Office:

c/o Yorkshire Dance
3 St Peter's Building
St Peter's Square
Leeds LS9 8AH

Tel: 0113 266 4036

LONDON

St John's House
16 St John's Vale
London SE8 4EN

Tel: 0208 694 1788

Email: office@directpm.co.uk

DAVID ROBERTSON

is Lear



Lear *Recycled*

*How shall your houseless heads and unfed sides
Defend you from seasons such as these?
Oh, I have taken too little care of this!*

July 14-18

Directed by SERGE ALVAREZ
with DAVID ROBERTSON as King Lear

A THEATRE OF THE DALES production
www.theatreofthedales.co.uk

A FREE PERFORMANCE
Pay as you feel